



**STRATEGIC MINERALS
FOR THE
ENERGY REVOLUTION**

PROJECT CODE
SM-022-2022

Code: ENA.4.2006
Reference: 7.2.1 –
8.2.1
(ISO 9001:2000)

Review: 0
Page 1 de 19
Effective Date: Dic.2022

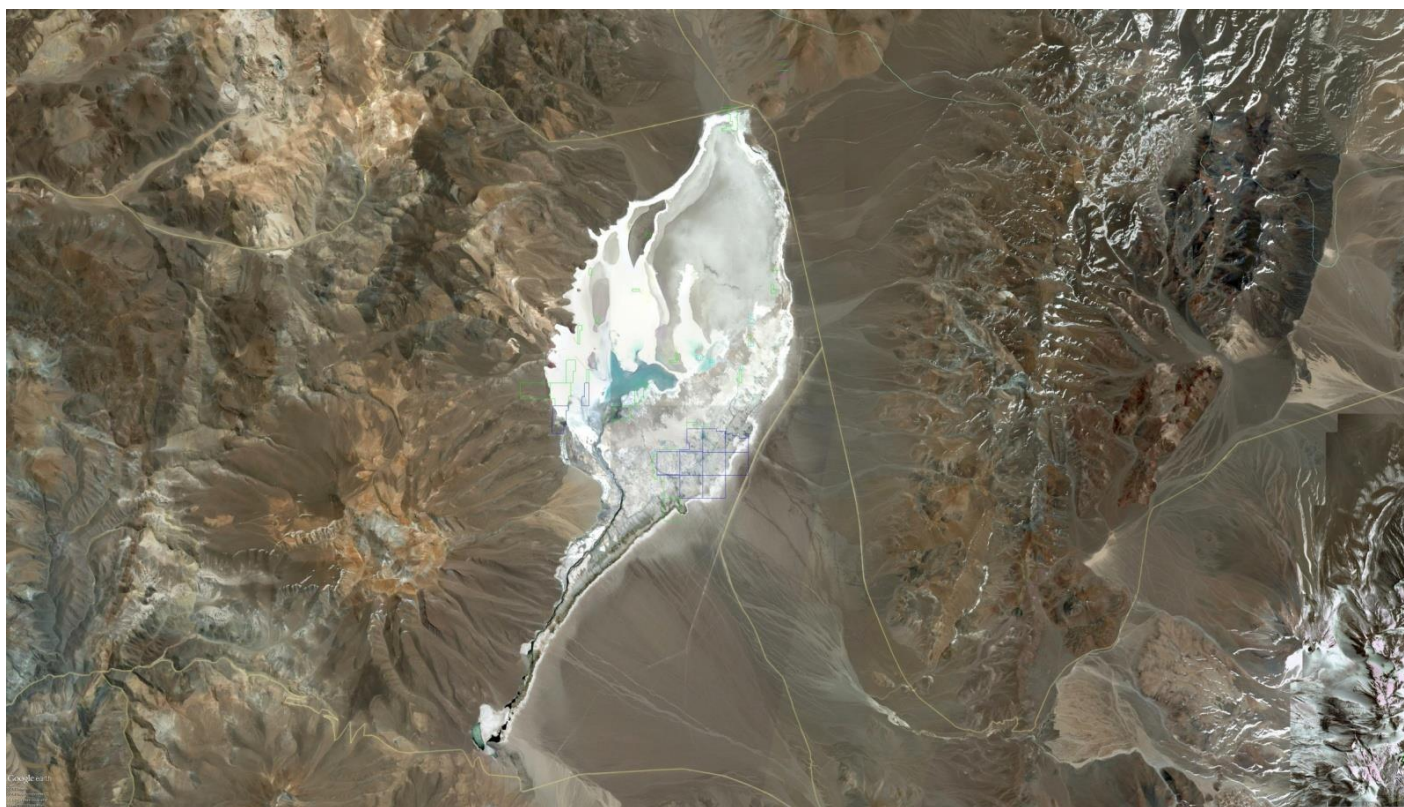
TRAFALGAR HOLDINGS USA & LATIN AMERICA®

Sales & Project development Company

www.Lithiumrus.com

SALAR DE MARICUNGA COPIAPÓ-ATACAMA CHILE

Element	Salar de Maricunga	Unit
Lithium	1,12	Grams/Liter
Potassium	8,23	Grams/Liter
Magnesium	7,34	Grams/Liter
Calcium	13,49	Grams/Liter
Sulfates	0,71	Grams/Liter



Contact : Info@Consultrafalgar.com



STRATEGIC MINERALS FOR THE ENERGY REVOLUTION

PROJECT CODE
SM-022-2022

Code: ENA.4.2006
Reference: 7.2.1 –
8.2.1
(ISO 9001:2000)

Review: 0
Page 2 de 19
Effective Date: Dic.2022

1.- Introducción:

The Legal Mining Companies Clarita, Lithium, Bongo, Yodobongo, Salebongo are owners of 41 mining exploitation concessions, with a constitutive sentence registered in the registry of mining property, of the Copiapó mine conservator. They cover an area of 1,506 hectares on the Salar de Maricunga. These concessions grant the right to exploit potassium and boron salts as the main product. Lithium carbonate is produced as a by-product resulting from the extraction of potassium and boron, which can be exploited in accordance with article 9 of the Chilean Mining Code.

The best lithium deposits in the world are found in northern Chile (Salar de Atacama, Salar de Maricunga and Laguna Verde) in terms of concentration, purity, low production cost and resources.

GRUPO CLARITA Area: 919 hectares.

Nº	SOCIEDAD LEGAL MINERA	CONCESION	ROL MINERO
1	CLARITA I UNA DE LA HOYADA DE MARICUNGA	CLARITA I, 1 /70	03201-8238-7
2	CLARITA II UNA DE LA HOYADA DE MARICUNGA	CLARITA II, 1 /96	03201-8239-5
3	CLARITA III UNA DE LA HOYADA DE MARICUNGA	CLARITA III, 1/71	03201-8240-9
4	CLARITA IV UNA DE LA HOYADA DE MARICUNGA	CLARITA IV, 1/20	03201-8241-7
5	CLARITA V UNA DE LA HOYADA DE MARICUNGA	CLARITA V 1/20	03201-8242-5
6	CLARITA VI UNA DE LA HOYADA DE MARICUNGA	CLARITA VI, 1/20	03201-8243-3
7	CLARITA VII UNA DE LA HOYADA DE MARICUNGA	CLARITA VII, 1/20	03201-8244-1
8	CLARITA VIII UNA DE LA HOYADA DE MARICUNGA	CLARITA VIII, 1/20	03201-8245-K
9	CLARITA IX UNA DE LA HOYADA DE MARICUNGA	CLARITA IX,1/20	03201-8246-8
10	CLARITA X UNA DE LA HOYADA DE MARICUNGA	CLARITA X, 1/24	03201-8247-6
11	CLARITA XII UNA DEL SECTOR SALAR DE MARICUNGA	CLARITA XII, 1/58	03201-8692-7



STRATEGIC MINERALS FOR THE ENERGY REVOLUTION

PROJECT CODE
SM-022-2022

Code: ENA.4.2006
Reference: 7.2.1 –
8.2.1
(ISO 9001:2000)

Review: 0
Page 3 de 19
Effective Date: Dic.2022

GRUPO BONGO – SALEBONGO – YODOBONGO Area: 569 hectares.

N°	SOCIEDAD LEGAL MINERA	CONCESION	ROL
			MINERO
1	BONGO 3 UNA DE LA SIERRA HOYADA DE MARICUNGA	BONGO 3, 1/3	03201-7569-0
2	BONGO 5 UNA DE LA SIERRA HOYADA DE MARICUNGA	BONGO 5, 1/3	03201-7570-4
3	BONGO 11 UNA DEL SALAR DE MARICUNGA	BONGO 11, 1/12	03201-8303-0
4	BONGO 12 UNA DEL SALAR DE MARICUNGA	BONGO 12, 1/10	03201-8304-9
5	BONGO 14 UNA DE LA SIERRA HOYADA DE MARICUNGA	BONGO 14, 1/3	03201-7572-0
6	BONGO 16 UNA DE LA SIERRA HOYADA DE MARICUNGA	BONGO 16, 1/3	03201-7573-9
7	BONGO 18 UNA DE LA SIERRA HOYADA DE MARICUNGA	BONGO 18, 1/3	03201-7575-5
8	BONGO 25 UNA DE LA SIERRA HOYADA DE MARICUNGA	BONGO 25, 1/2	03201-7576-3
9	BONGO 27 UNA DE LA SIERRA HOYADA DE MARICUNGA	BONGO 27, 1/40	03201-7577-1
10	BONGO 34 UNA DE LA SIERRA HOYADA DE MARICUNGA	BONGO 34, 1/38	032017582-8
11	BONGO 35 UNA DE LA SIERRA HOYADA DE MARICUNGA	BONGO 35, 1/91	03201-7578-K
12	BONGO 36 UNA DEL SALAR DE MARICUNGA	BONGO 36, 1/35	03201-8305-
13	BONGO 40 UNA DE LA SIERRA HOYADA DE MARICUNGA	BONGO 40, 1/6	03201-7571-2
14	BONGO 41 UNA DE LA SIERRA HOYADA DE MARICUNGA	BONGO 41, 1/3	03201-7579-8
15	BONGO I , 9 UNA DE LA SIERRA HOYADA DE MARICUNGA	BONGO I 9, 1/19	03201-7585-2
16	BONGO II , 8 UNA DE LA SIERRA HOYADA DE MARICUNGA	BONO II 8, 1/9	03201-7584-4
17	BONGO VI , 17 UNA DE LA SIERRA HOYADA DE MARICUNGA	BONGO VI 17, 1/7	03201-7574-7
18	YODO BONGO 7 UNA DE LA SIERRA HOYADA DE MARICUNGA	YODO BONGO 7, 1/16	03201-7581-K
19	YODO BONGO 15 UNA DE LA SIERRA HOYADA DE MARICUNGA	YODO BONGO 15, 1/70	03201-7587-9
20	YODO BONGO 24 UNA DE LA SIERRA HOYADA DE MARICUNGA	YODO BONGO 24, 1/70	03201-7587-9
21	SALEBONGO 9 UNA DE LA SIERRA HOYADA DE MARICUNGA	SALEBONGO 9, 1/5	03201-7580-1
22	SALEBONGO 28 UNA DE LA SIERRA HOYADA DE MARICUNGA	SALEBONGO 28, 1/80	03201-7586-0
23	SALEBONGO 33 UNA DE LA SIERRA HOYADA DE MARICUNGA	SALEBONGO 33, 1/47	03201-7583-6



STRATEGIC MINERALS FOR THE ENERGY REVOLUTION

PROJECT CODE
SM-022-2022

Code: [ENA.4.2006](#)
Reference: [7.2.1 – 8.2.1](#)
(ISO 9001:2000)

Review: 0
Page 4 de 19
Effective Date: [Dic.2022](#)

GRUPO BONGO – SALEBONGO - YODOBONGO

GRUPO LITHIUM Area: 12 hectares.

Nº	SOCIEDAD LEGAL MINERA	CONCESION	ROL MINERO
1	LITHIUM III UNA DEL SECTOR SALAR DE MARICUNGA	LITHIUM III 1/3	03201-9525-0
2	LITHIUM V UNA DEL SECTOR SALAR DE MARICUNGA	LITHIUM V 1/2	03201-9527-7
3	LITHIUM VI UNA DEL SECTOR SALAR DE MARICUNGA	LITHIUM VI 1/2	03201-9528-5
4	LITHIUM VII 1 DEL SECTOR SALAR DE MARICUNGA	LITHIUM VII 1	03201-9529-3
5	LITHIUM VIII 1 DEL SECTOR SALAR DE MARICUNGA	LITHIUM VIII 1	03201-9530-7
6	LITHIUM X 1 DEL SECTOR SALAR DE MARICUNGA	LITHIUM X 1	03201-9532-3
7	LITHIUM XI UNA DEL SECTOR SALAR DE MARICUNGA	LITHIUM XI 1/2	03201-9533-1

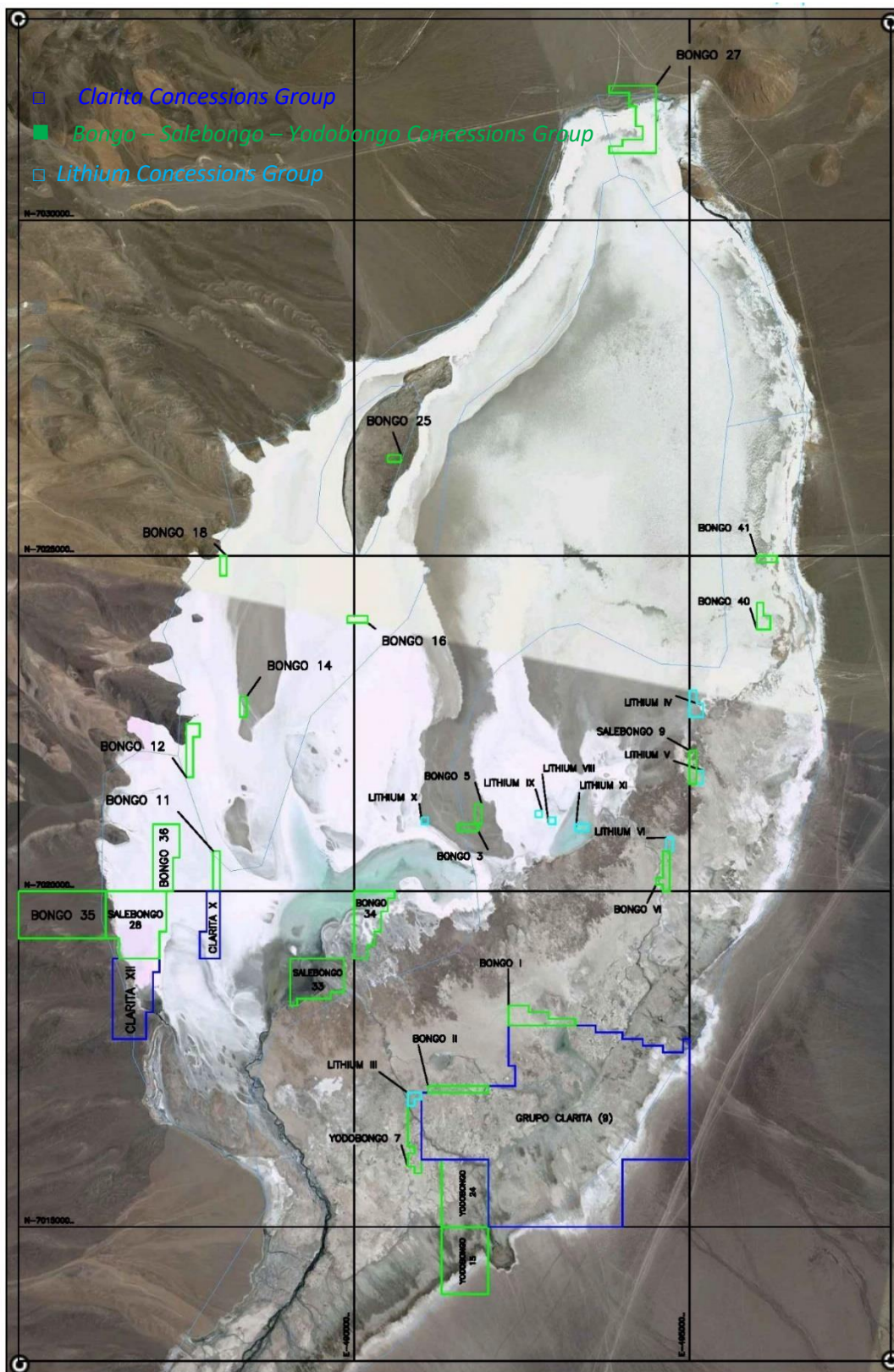


STRATEGIC MINERALS FOR THE ENERGY REVOLUTION

PROJECT CODE
SM-022-2022

Code: [ENA.4.2006](#)
Reference: [7.2.1 – 8.2.1](#)
(ISO 9001:2000)

Review: 0
Page 5 de 19
Effective Date: Dic.2022





STRATEGIC MINERALS FOR THE ENERGY REVOLUTION

PROJECT CODE
SM-022-2022

Code: ENA.4.2006
Reference: 7.2.1 –
8.2.1
(ISO 9001:2000)

Review: 0
Page 6 de 19
Effective Date: Dic.2022

2.- Regional Location:

The Maricunga salt flat is located 135 kilometers northeast of the City of Copiapó in the Andes Mountains, Third Region of Atacama, Commune and Province of Copiapó, has a total area of approximately 142 square kilometers and at a height of approximately 3.800 m.a.s.l.

This salt deposit has the second highest concentration of lithium in the known world to date, only surpassed by the Salar de Atacama.

The salt deposit in the Salar de Maricunga has been exploited in order to produce salts on a small scale, only for the maintenance of secondary roads in the north of Chile.

3.- Project localization:

The concessions are located approximately at the UTM coordinates (PSAD 56) North 7,018,000.00 meters and East 493,000.00 meters, in the SE sector of the salt deposit, and close to its central nucleus. These concessions cover approximately 10% of the deposit's total salt area.



4.- Access, Infrastructure and facilities:

Access to the concessions from the city of Copiapó is easy and fast throughout the year through the CH-31 international highway that leads to the San Francisco border complex. There is an electrical power line that passes through the eastern edge of the Salar de Maricunga. The sector has a telephone signal and mobile internet on behalf of the company Entel pcs. The concessions have a sufficient area for the installation of the plants, ponds, camps and in general for all the necessary facilities for a large-scale operation. The environmental studies of a project have not yet been prepared.



STRATEGIC MINERALS FOR THE ENERGY REVOLUTION

PROJECT CODE
SM - 0 2 2 - 2 0 2 2

Code: ENA.4.2006
Reference: 7.2.1 –
8.2.1
(ISO 9001:2000)

Review: 0
Page 7 de 19
Effective Date: Dic.2022

5.- Exploration and Reserves:

Clarita - Bongo prospect have not been explored within the limits of their concessions. However, the mining company Lithium Power International (L.P.I.) from 2011 to date has developed an extensive exploration campaign with drilling, geophysics, geology, hydrogeology and gravimetry over the entire Salar de Maricunga basin. During the month of February 2021 L.P.I. finalized its Technical Report NI-43-101, prepared by Worley Parsons, in which they publish for a part of their mining concessions (1,125 hectares) Measured + Indicated resources for 1,905,000.00 tons of lithium carbonate and 4,950,000, 00 tons of potassium chloride. The mining concessions of Lithium Power International are located, on average, 5 kilometers north of the Clarita – Bongo Prospect, both groups are located 100% on the Salar de Maricunga and share the same geological framework. On the other hand, Codelco Chile announced in April 2013 that in its concessions located in the Salar de Maricunga, it has resources for 1,790,000 tons of Lithium Carbonate, these concessions are adjacent to the Claritas, Bongo and Lithium concessions.

As additional information and from a good source, there is a report made by the Mixed Salts Committee in 1981 and the report called "Background for a Public Policy on Strategic Minerals: Lithium" (from/12/09), made by the Commission Copper Chile.

6.- Resources Tested by L.P.I.:

The results of Report NI-43-101 carried out by L.P.I., in a group of mining concessions in Salar de Maricunga are indicated as a reference:

Element	Salar de Maricunga	Unit
Lithium	1,12	Grams/Liter
Potassium	8,23	Grams/Liter
Magnesium	7,34	Grams/Liter
Calcium	13,49	Grams/Liter
Sulfates	0,71	Grams/Liter

7.- Comparative table of grades in grams per liter:

Element	Laguna Verde	Maricunga	Atacama
Lithium	0,213	1,12	1,5
Potassium	4,881	8,23	18
Magnesium	2,545	7,34	9,6
Boron	0,522	0,60	
Calcium	0,899	13,49	
Sulfates	15,985	0,71	17,8

Studies have shown that the Salar de Maricunga as a salt deposit has the highest concentration of Li and K after the salt deposit in the Salar de Atacama.



STRATEGIC MINERALS FOR THE ENERGY REVOLUTION

PROJECT CODE
SM-022-2022

Code: ENA.4.2006
Reference: 7.2.1 –
8.2.1
(ISO 9001:2000)

Review: 0
Page 8 de 19
Effective Date: Dic.2022

8.- Preliminary Projection of Clarita Prospect Reserves – Bongo:

The preliminary projection of reserves on our project was carried out taking as a reference the reserves proven by LPI in its study NI-43-101, as indicated in this study the concentrations tend to be homogeneous within the basin of the salar, in addition to according to plans of isoleys in this same report, lithium concentrations increase towards the south of the salt flat, which is precisely where our songs are located.

Based on these data for public use, we infer that our group of concessions, being 5 kilometers away from the Salar Blanco concessions and both being 100% on the Salar de Maricunga, share the same geological and hydrogeological conditions as our neighbors Salar Blanco.

The preliminary projection of reserves was made considering the 1,500 hectares of salt flats that we control, with a depth of 300 meters, a porosity of 10%, a concentration of lithium in brine equivalent to 1.1 gr/L and recovery efficiency in the metallurgical process. equivalent to 65%. With these data, the final result was obtained to recover a total volume of 1,711,710 tons of L.C.E.

SALAR DE MARICUNGA CLARITA BONGO PROJECT PRELIMINARY ESTIMATE OF MINERAL RESOURCES/RESERVES

AREA	hectares	1.500		
	m2	15.000.000		
	million m2	15		
Thickness (depth) with Lithium (minimum)	m	300		
Volume ore deposit	million m3	4.500		
Media drainable Porosity (specific yield)	%	10		
Volume brine	millon m3	450		
Concentration of lithium (Li) in brine	gpl	1,1		
Concentration of K in brine.	gpl	8,5		
Mineral Resources Li and K			Li	K
Contained lithium and potassium	million Kg		495	3.825
Contained lithium and potassium	Tonnes		495.000	3.825.000
Mineral Resources Li2CO3 and KCl			LCE	KCL
Contained LCE and KCl	Tonnes		2.633.400	7.267.500
	Ton/he		1.756	4.845
Reserves of LCE and KCl				
Global recovery	%		65	65
Reserves without classification	Tonnes		1.711.710	4.723.875
Reserves per hectare	Ton/he		1.141	3.149



STRATEGIC MINERALS FOR THE ENERGY REVOLUTION

PROJECT CODE
SM - 0 2 2 - 2 0 2 2

Code: ENA.4.2006
Reference: 7.2.1 –
8.2.1
(ISO 9001:2000)

Review: 0
Page 9 de 19
Effective Date: Dic.2022

Notes:

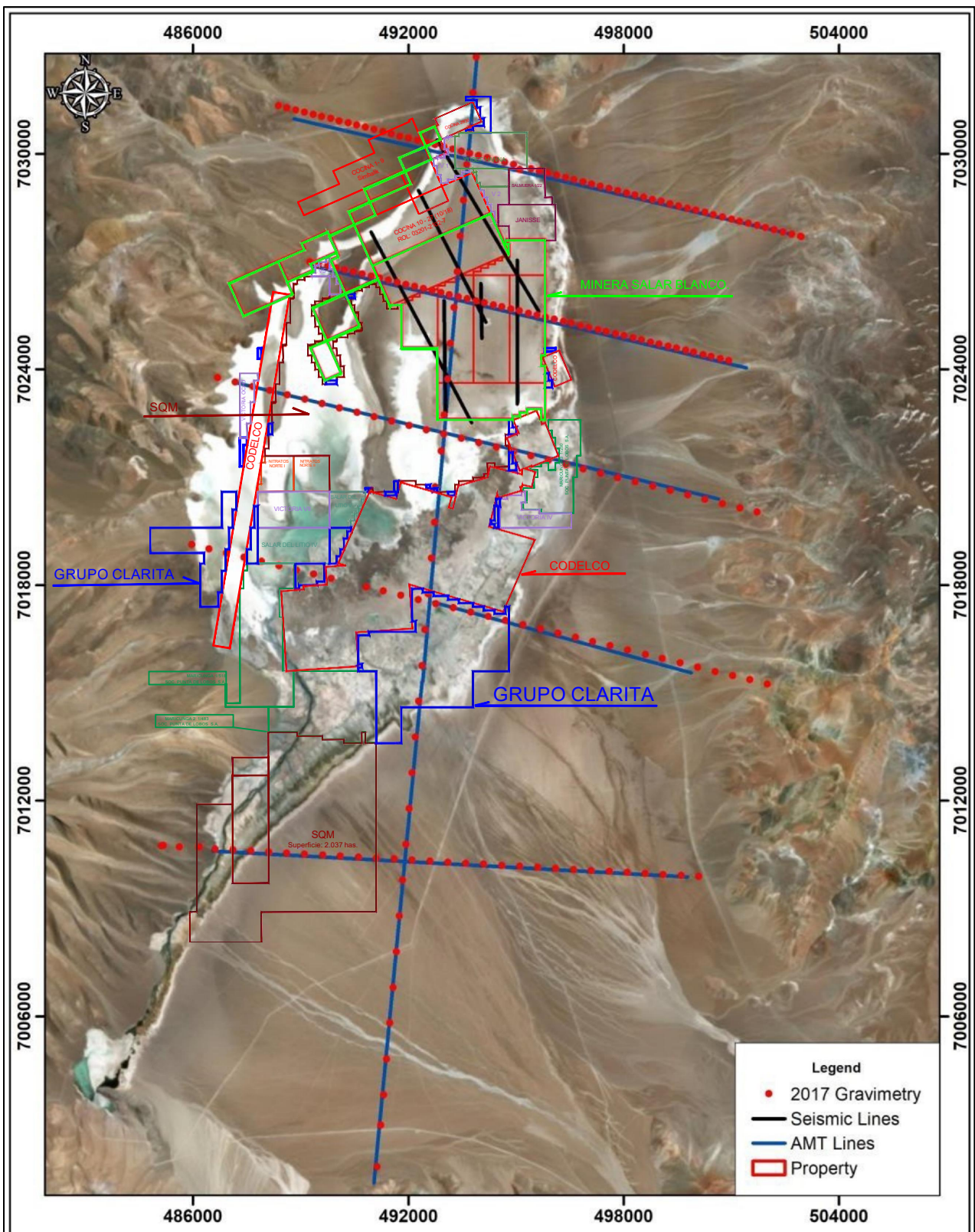
(1): according to a neighbour project feasibility	gpl	grams per liter
	m3	cubic meter
	Tonnes	metric ton
(2): This Table was calculated with following assumptions		
Geology was considered the same for Clarita Bongo project and neighbours		
Depth of aquifer was considered to be 300m average, less than the 400 m estimated by neighbour. Unti today the aquifer is open downward.		
Both concentrations Li and K were estimated same that neighbours.		
Porosity is the specific yield (Sy) .		
To transform Li to LCE (lithium carbonate equivalent) multiply by 5,32		
To transform K to KCl (potash) multiply by 1,9.		
Global metallurgical recovery was estimated according to experience in Chile.		
Figures of mineral resources and reserves are only preliminary estimate.		
Mineral resources are considered as INFERRED because there are not any drilling campaign today.		
Reserves can not be classified because resources are inferred.		
It is recommended to start a drilling campaign to improve the resources and reserves classification.		
Magnesium to Lithium ratio=6,5 to produce LCE opex at very low cost.		
Clarita Bongo project is one with the lowest opex cost worldwide.		
Clarita Bongo has one of the highest grade in LCE worldwide.		
According to studies by neighbour, the deepest area of the salar, more than 1000 meters depth, is covered by Clarita properties and Codelco		

9.- DISCLAIMER:

THIS DRAWING CONTAINS INFORMATION OBTAINED FROM TECHNICAL REPORT NI-43-101 PROPERTY OF LITHIUM POWER INTERNATIONAL. IT IS MADE PRESENT THAT ALL THE INFORMATION IS PUBLIC AND HAS BEEN OBTAINED FROM THE INTERNET IN ORDER TO ILLUSTRATE THE GENERAL CONDUCT OF MINERALIZATION IN THE MARICUNGA SALT FLAT,

Annexes:





LOCATION MAP OF SEISMIC REFRACTION TOMOGRAPHY,
AMT AND GRAVITY PROFILES, IN THE MARICUNGA SALT FLAT.

GROUPS OF MINING CONCESSIONS
ON SALAR DE MARICUNGA

- GRUPO CLARITA; SUPERFICIE 1.500 has.
- GRUPO L.P.I.; SUPERFICIE 2.564 has.
- GRUPO CODELCO; SUPERFICIE 2.690 has.
- GRUPO SQM; SUPERFICIE 4.290 has.

MARICUNGA SALT FLAT

PROSPECT:
CLARITA BONGO

CLIENT:

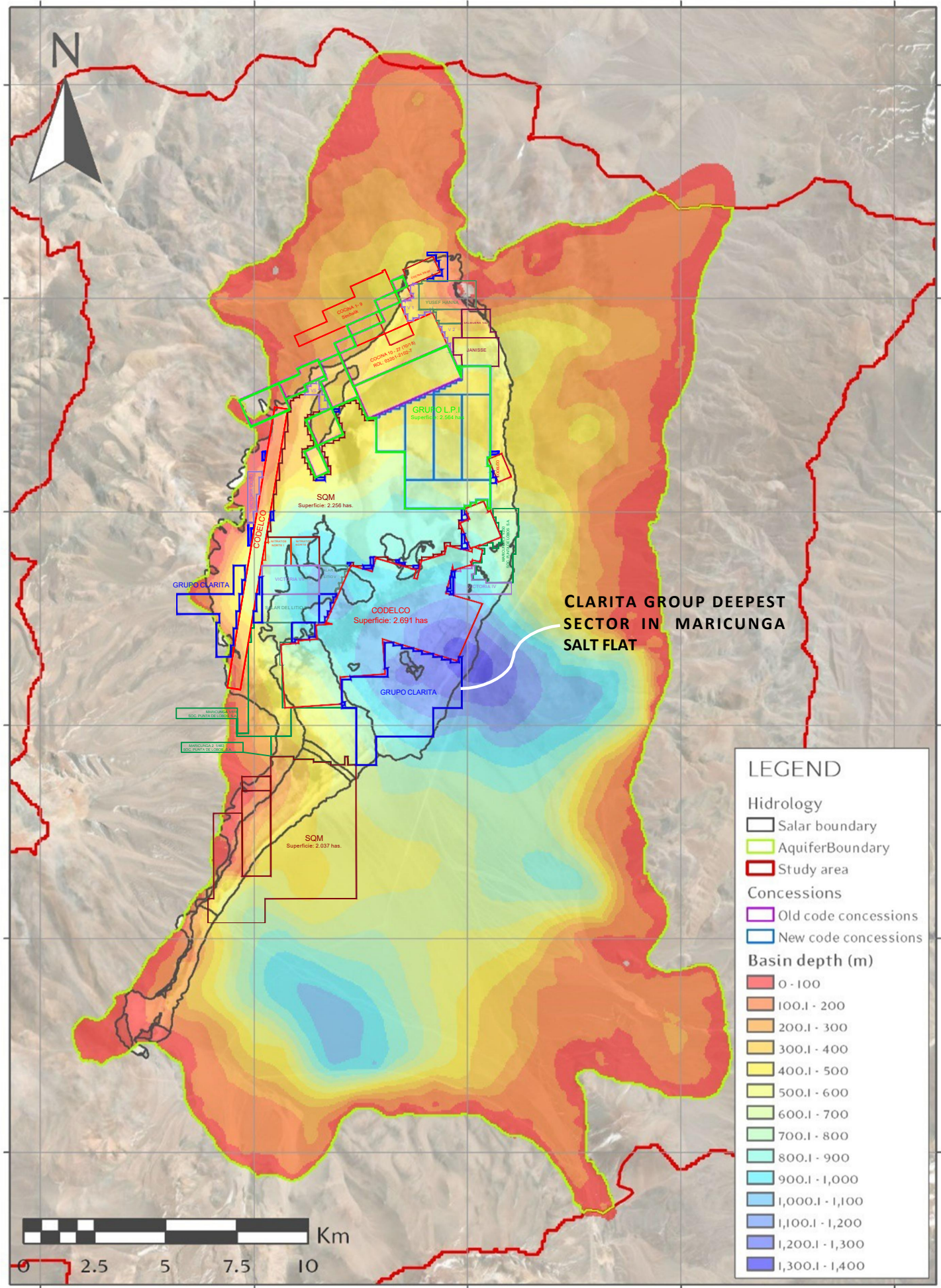
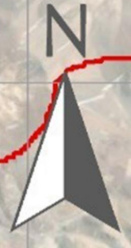
UTM Proyeccion: WGS 84, Zone 19S

DISCLAIMER: THIS DRAWING CONTAINS INFORMATION OBTAINED FROM TECHNICAL REPORT NI-43-101 PROPERTY OF LITHIUM POWER INTERNATIONAL. IT IS MADE PRESENT THAT ALL THE INFORMATION IS PUBLIC AND HAS BEEN OBTAINED FROM THE INTERNET IN ORDER TO ILLUSTRATE THE GENERAL CONDUCT OF MINERALIZATION IN THE MARICUNGA SALT FLAT.

480000 487500 495000 502500 510000

7037500
7030000
7022500
7015000
7007500
7000000

7037500
7030000
7022500
7015000
7007500
7000000



CLARITA GROUP DEEPEST SECTOR IN MARICUNGA SALT FLAT

LEGEND

Hidrology

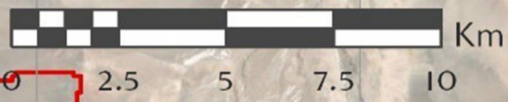
- Salar boundary
- AquiferBoundary
- Study area

Concessions

- Old code concessions
- New code concessions

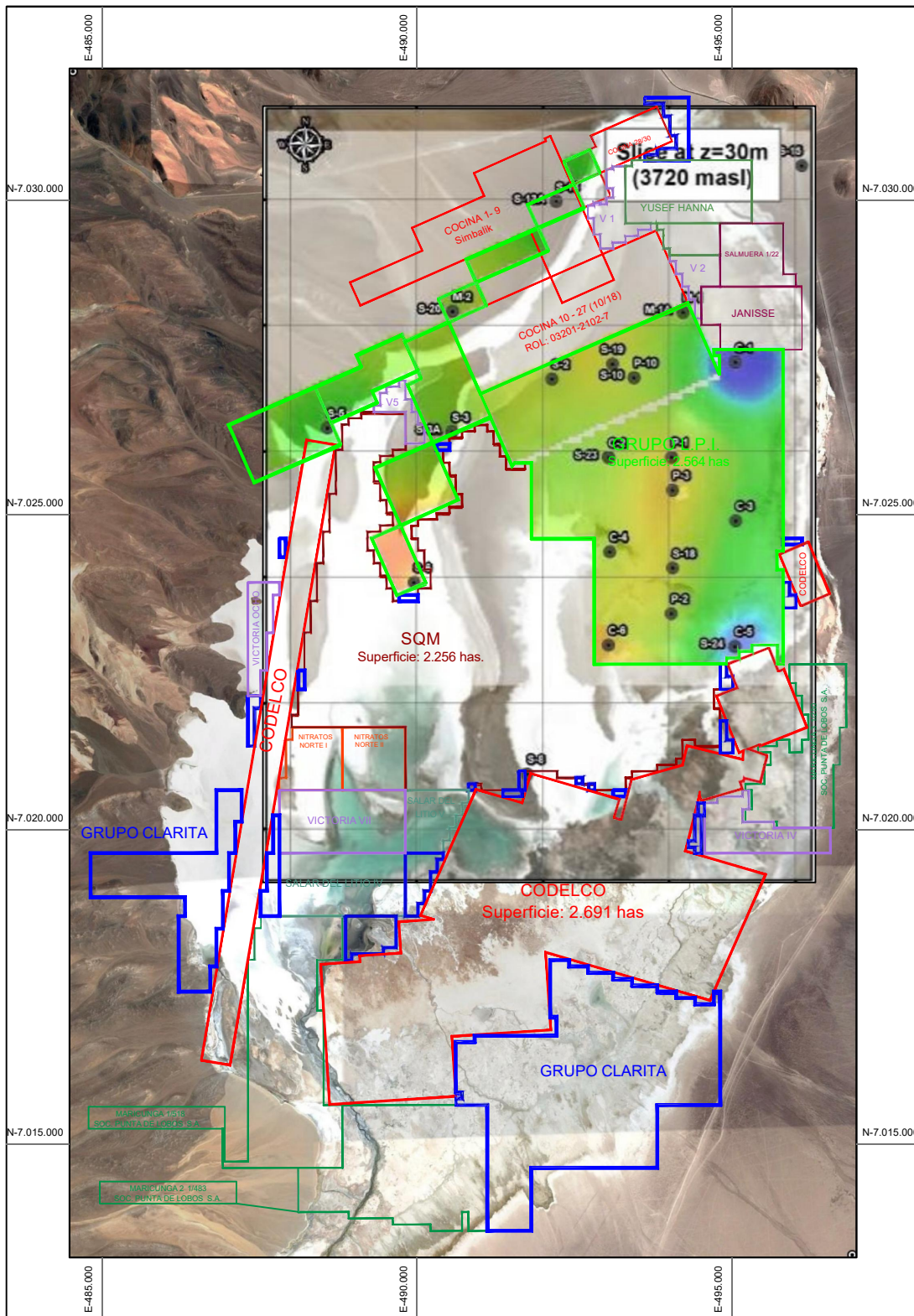
Basin depth (m)

- 0 - 100
- 100.1 - 200
- 200.1 - 300
- 300.1 - 400
- 400.1 - 500
- 500.1 - 600
- 600.1 - 700
- 700.1 - 800
- 800.1 - 900
- 900.1 - 1,000
- 1,000.1 - 1,100
- 1,100.1 - 1,200
- 1,200.1 - 1,300
- 1,300.1 - 1,400

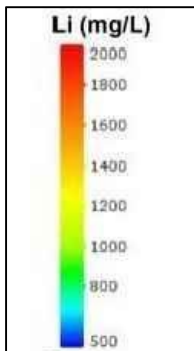


480000 487500 495000 502500 510000

Lithium concentration distribution at z=30m



LITHIUM GRADE



LITHIUM CONCENTRATION DISTRIBUTION IN THE MARICUNGA SALT FLAT

GROUPS OF MINING CONCESSIONS ON SALAR DE MARICUNGA

- GRUPO CLARITA; SUPERFICIE 1.500 has.
- GRUPO L.P.I.; SUPERFICIE 2.564 has.
- GRUPO CODELCO; SUPERFICIE 2.690 has.
- GRUPO SQM; SUPERFICIE 4.290 has.

LITHIUM CONCENTRATION (mg/L)

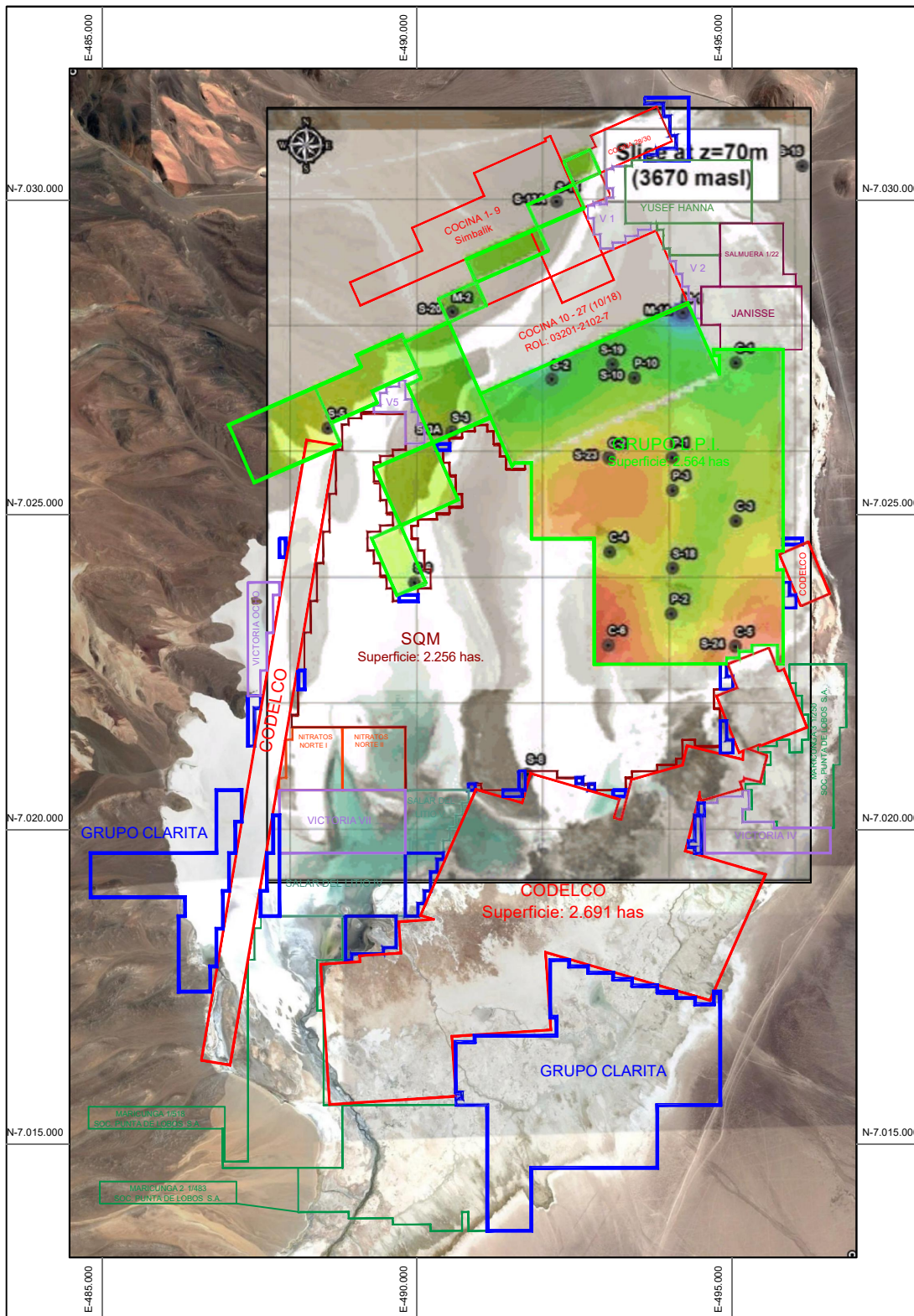
PROSPECT:
CLARITA BONGO

CLIENT:

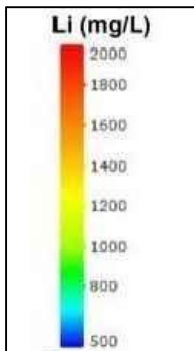
UTM Projection: WGS 84, Zone 19S

DISCLAIMER: THIS DRAWING CONTAINS INFORMATION OBTAINED FROM TECHNICAL REPORT NI-43-101 PROPERTY OF LITHIUM POWER INTERNATIONAL. IT IS MADE PRESENT THAT ALL THE INFORMATION IS PUBLIC AND HAS BEEN OBTAINED FROM THE INTERNET IN ORDER TO ILLUSTRATE THE GENERAL CONDUCT OF MINERALIZATION IN THE MARICUNGA SALT FLAT.

Lithium concentration distribution at z=70m



LITHIUM GRADE



LITHIUM CONCENTRATION DISTRIBUTION IN THE MARICUNGA SALT FLAT

GROUPS OF MINING CONCESSIONS ON SALAR DE MARICUNGA

- GRUPO CLARITA; SUPERFICIE 1.500 has.
- GRUPO L.P.I.; SUPERFICIE 2.564 has.
- GRUPO CODELCO; SUPERFICIE 2.690 has.
- GRUPO SQM; SUPERFICIE 4.290 has.

LITHIUM CONCENTRATION (mg/L)

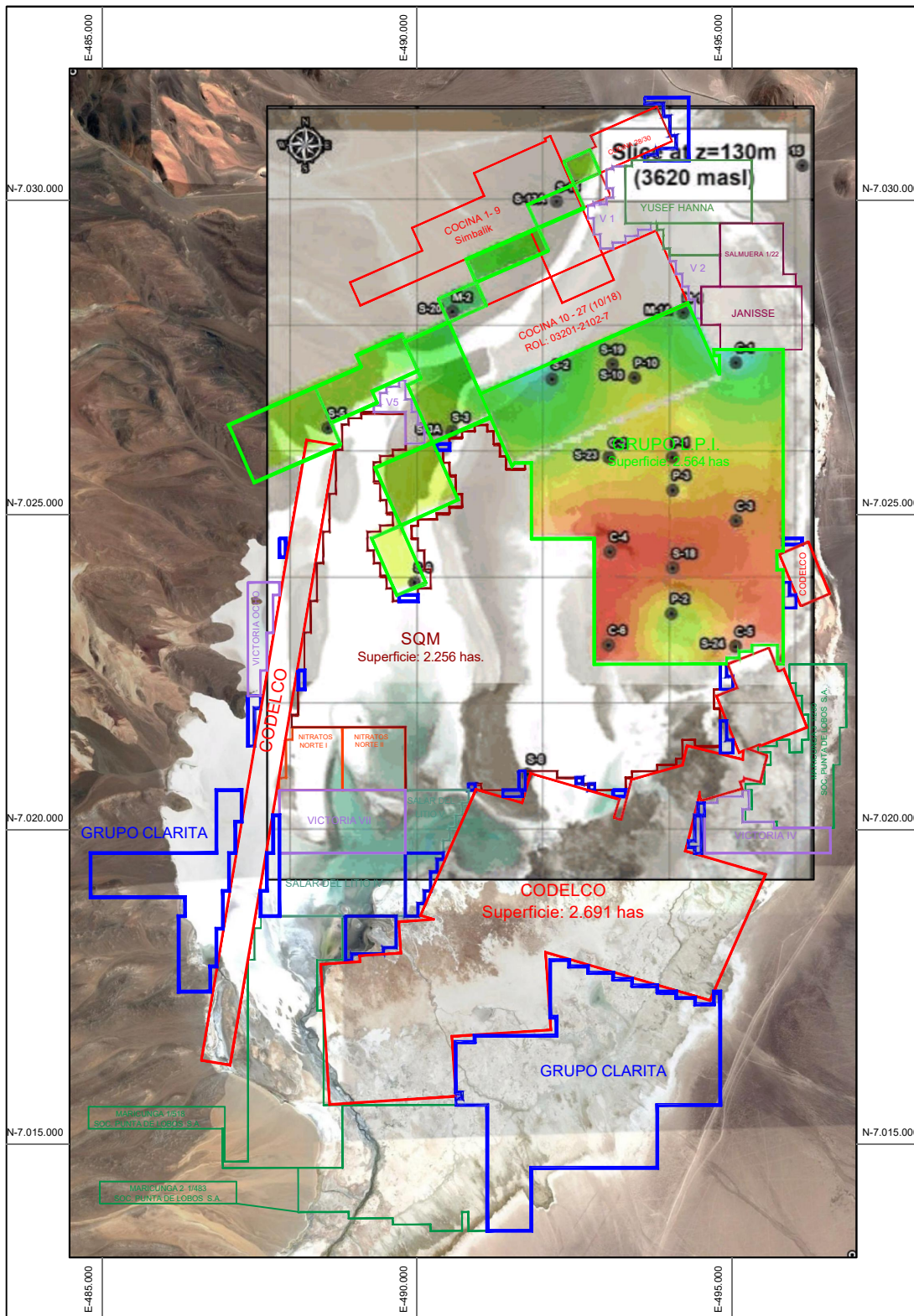
PROSPECT:
CLARITA BONGO

CLIENT:

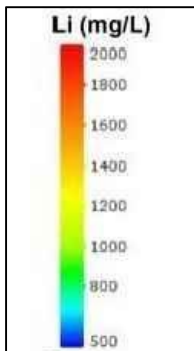
UTM Projection: WGS 84, Zone 19S

DISCLAIMER: THIS DRAWING CONTAINS INFORMATION OBTAINED FROM TECHNICAL REPORT NI-43-101 PROPERTY OF LITHIUM POWER INTERNATIONAL. IT IS MADE PRESENT THAT ALL THE INFORMATION IS PUBLIC AND HAS BEEN OBTAINED FROM THE INTERNET IN ORDER TO ILLUSTRATE THE GENERAL CONDUCT OF MINERALIZATION IN THE MARICUNGA SALT FLAT.

Lithium concentration distribution at z=130m



LITHIUM GRADE



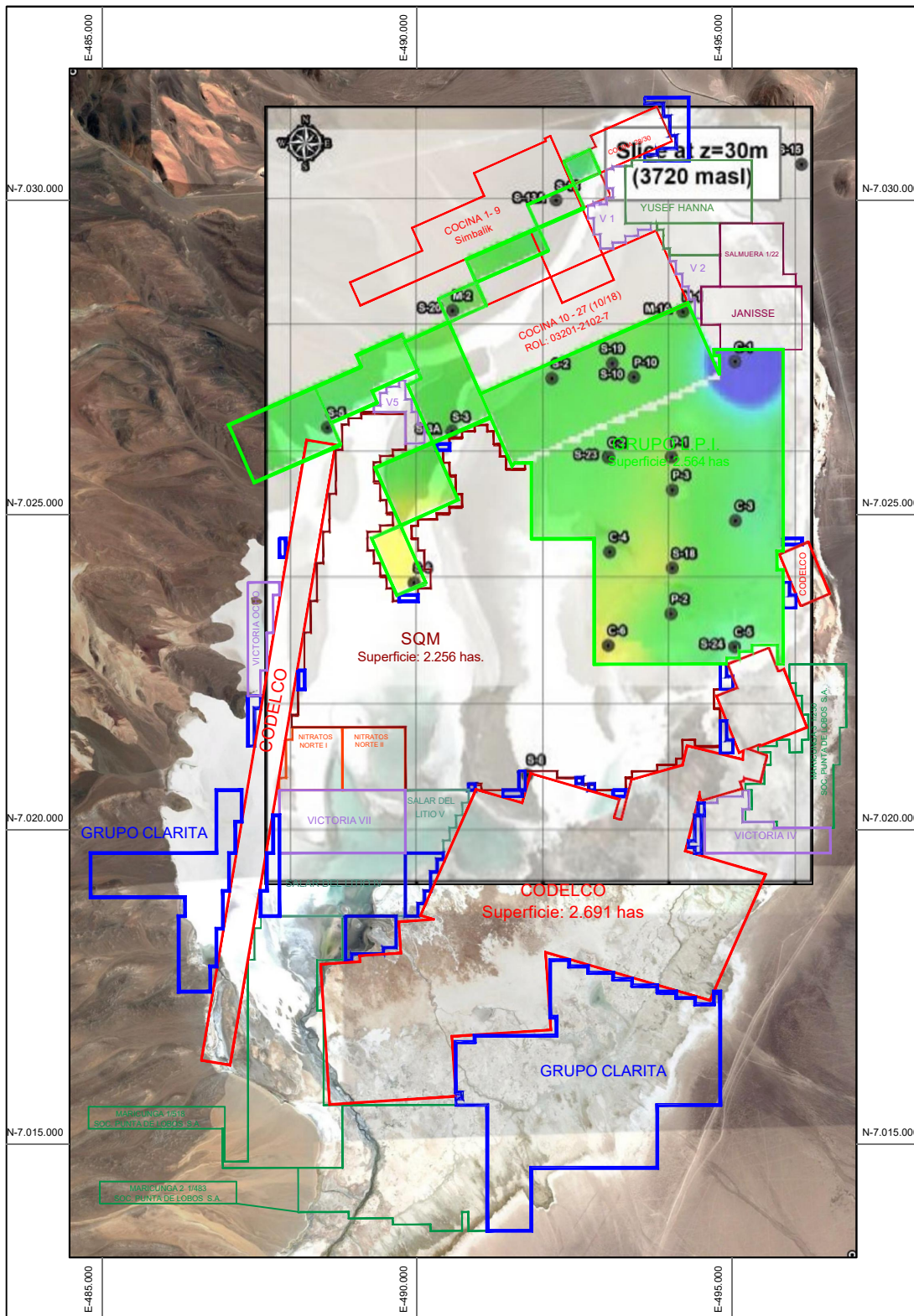
LITHIUM CONCENTRATION DISTRIBUTION IN THE MARICUNGA SALT FLAT

- GROUPS OF MINING CONCESSIONS ON SALAR DE MARICUNGA
- GRUPO CLARITA; SUPERFICIE 1.500 has.
 - GRUPO L.P.I.; SUPERFICIE 2.564 has.
 - GRUPO CODELCO; SUPERFICIE 2.690 has.
 - GRUPO SQM; SUPERFICIE 4.290 has.

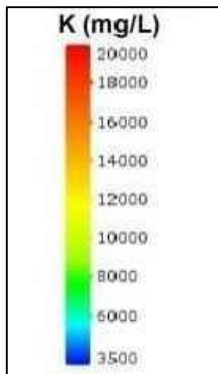
LITHIUM CONCENTRATION (mg/L)
PROSPECT: CLARITA BONGO
CLIENT:
UTM Projection: WGS 84, Zone 19S

DISCLAIMER: THIS DRAWING CONTAINS INFORMATION OBTAINED FROM TECHNICAL REPORT NI-43-101 PROPERTY OF LITHIUM POWER INTERNATIONAL. IT IS MADE PRESENT THAT ALL THE INFORMATION IS PUBLIC AND HAS BEEN OBTAINED FROM THE INTERNET IN ORDER TO ILLUSTRATE THE GENERAL CONDUCT OF MINERALIZATION IN THE MARICUNGA SALT FLAT.

Potassium concentration distribution at z=30m



POTASSIUM GRADE



POTASSIUM CONCENTRATION DISTRIBUTION IN THE MARIKUNGA SALT FLAT

GROUPS OF MINING CONCESSIONS ON SALAR DE MARIKUNGA

- GRUPO CLARITA; SUPERFICIE 1.500 has.
- GRUPO L.P.I.; SUPERFICIE 2.564 has.
- GRUPO CODELCO; SUPERFICIE 2.690 has.
- GRUPO SQM; SUPERFICIE 4.290 has.

POTASSIUM CONCENTRATION (mg/L)

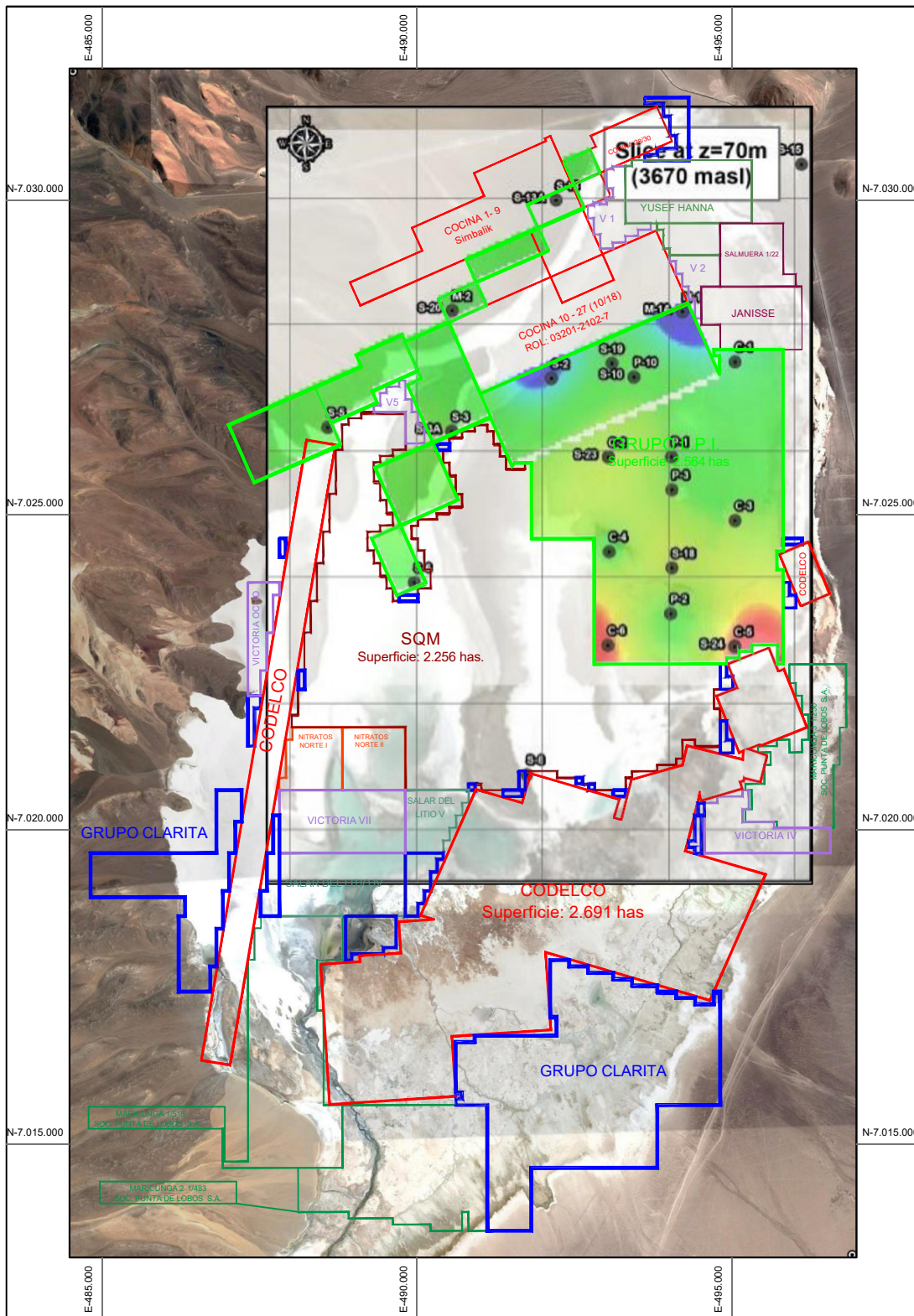
PROSPECT:
CLARITA BONGO

CLIENT:

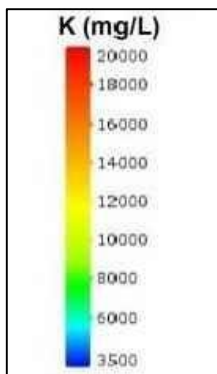
UTM Projection: WGS 84, Zone 19S

DISCLAIMER: THIS DRAWING CONTAINS INFORMATION OBTAINED FROM TECHNICAL REPORT NI-43-101 PROPERTY OF LITHIUM POWER INTERNATIONAL. IT IS MADE PRESENT THAT ALL THE INFORMATION IS PUBLIC AND HAS BEEN OBTAINED FROM THE INTERNET IN ORDER TO ILLUSTRATE THE GENERAL CONDUCT OF MINERALIZATION IN THE MARIKUNGA SALT FLAT.

Potassium concentration distribution at z=70m



POTASSIUM GRADE



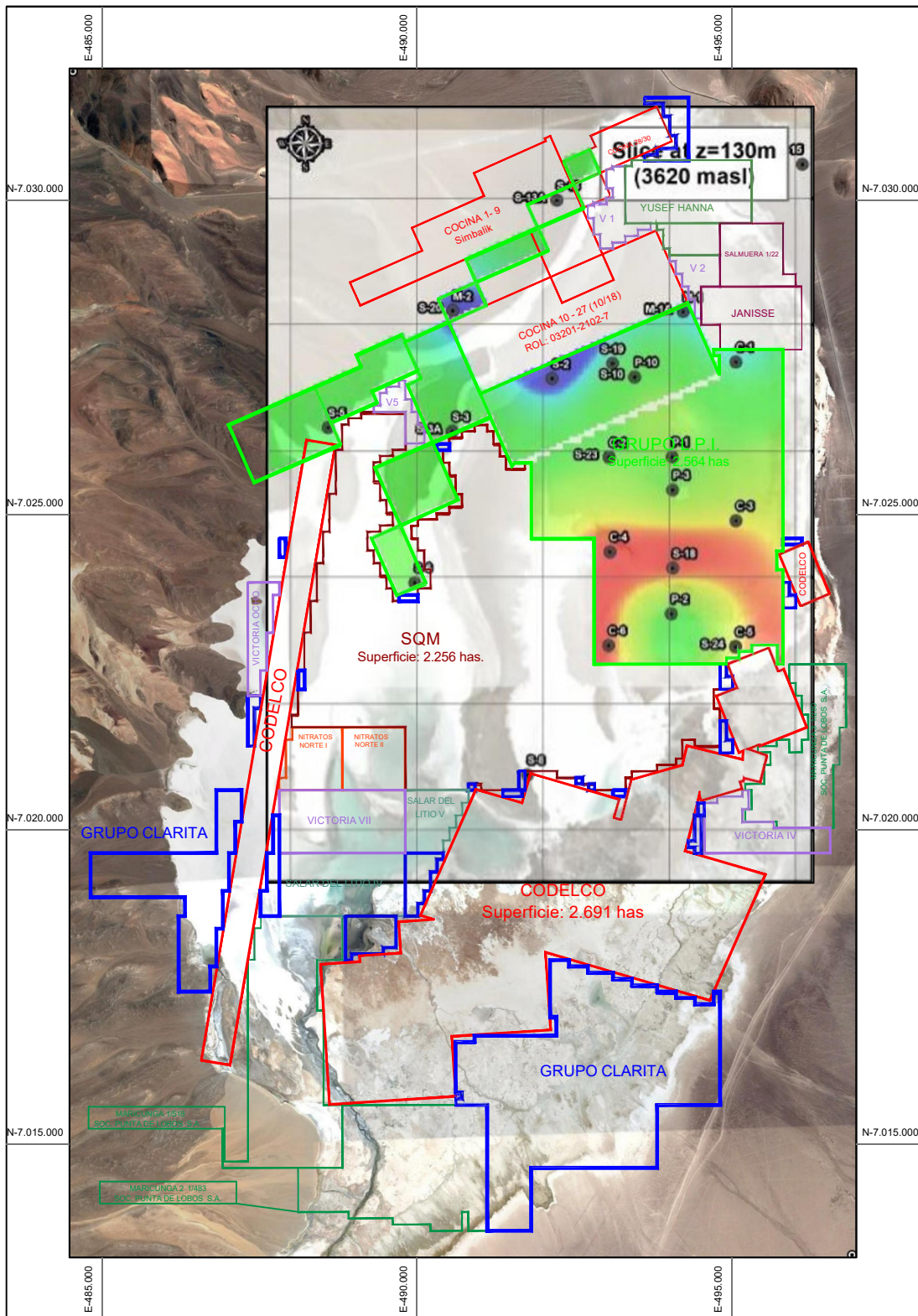
POTASSIUM CONCENTRATION DISTRIBUTION IN THE MARICUNGA SALT FLAT

- GROUPS OF MINING CONCESSIONS ON SALAR DE MARICUNGA**
- GRUPO CLARITA; SUPERFICIE 1.500 has.
 - GRUPO L.P.I.; SUPERFICIE 2.564 has.
 - GRUPO CODELCO; SUPERFICIE 2.690 has.
 - GRUPO SQM; SUPERFICIE 4.290 has.

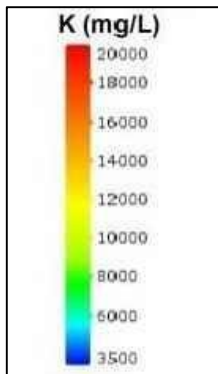
POTASSIUM CONCENTRATION (mg/L)	
PROSPECT:	CLARITA BONGO
CLIENT:	-----
UTM Projection: WGS 84, Zone 19S	

DISCLAIMER: THIS DRAWING CONTAINS INFORMATION OBTAINED FROM TECHNICAL REPORT NI-43-101 PROPERTY OF LITHIUM POWER INTERNATIONAL. IT IS MADE PRESENT THAT ALL THE INFORMATION IS PUBLIC AND HAS BEEN OBTAINED FROM THE INTERNET IN ORDER TO ILLUSTRATE THE GENERAL CONDUCT OF MINERALIZATION IN THE MARICUNGA SALT FLAT.

Potassium concentration distribution at z=130m



POTASSIUM GRADE



POTASSIUM CONCENTRATION DISTRIBUTION IN THE MARIKUNGA SALT FLAT

GROUPS OF MINING CONCESSIONS ON SALAR DE MARIKUNGA

- GRUPO CLARITA; SUPERFICIE 1.500 has.
- GRUPO L.P.I.; SUPERFICIE 2.564 has.
- GRUPO CODELCO; SUPERFICIE 2.690 has.
- GRUPO SQM; SUPERFICIE 4.290 has.

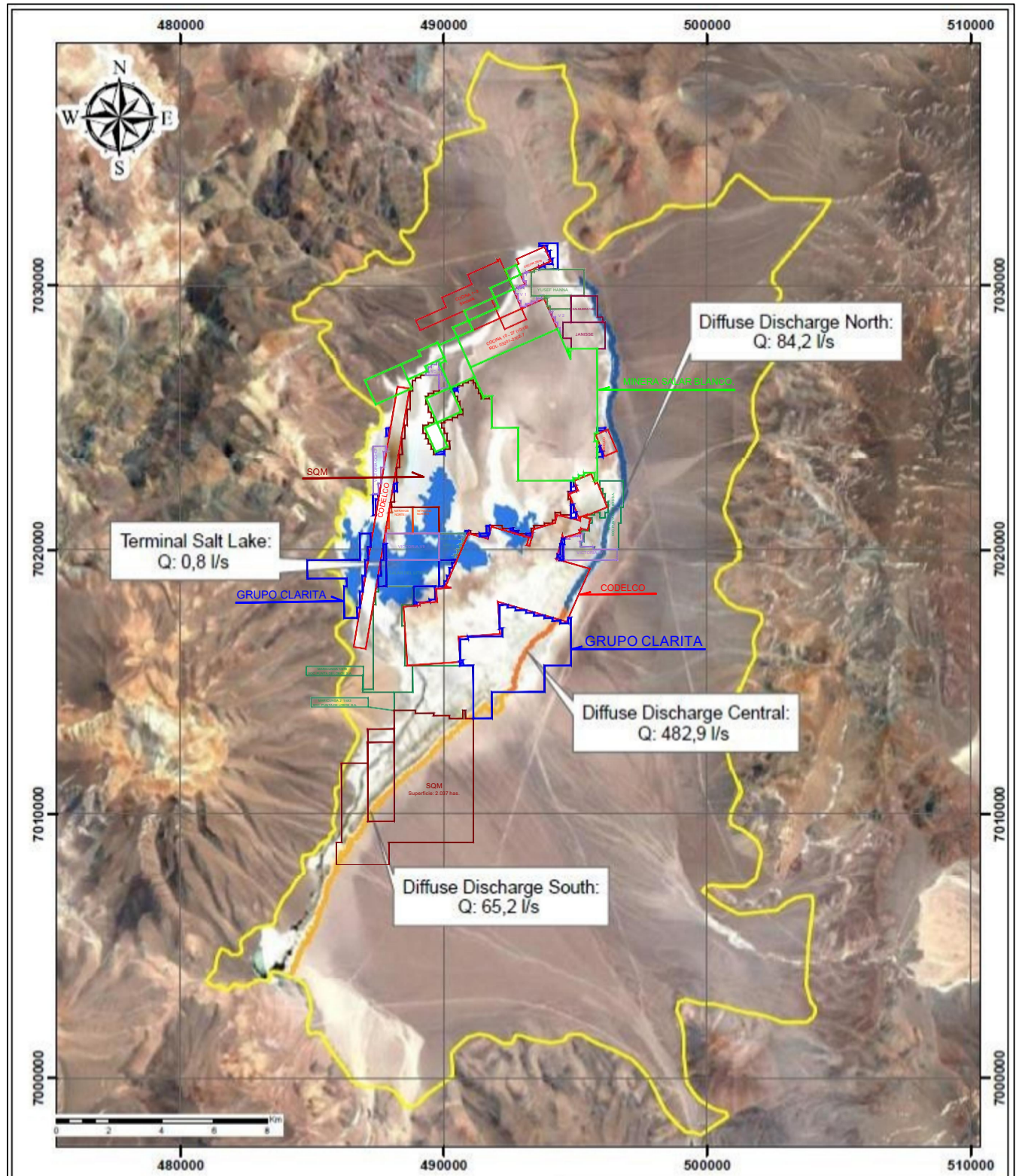
POTASSIUM CONCENTRATION (mg/L)

PROSPECT:
CLARITA BONGO

CLIENT:

UTM Projection: WGS 84, Zone 19S

DISCLAIMER: THIS DRAWING CONTAINS INFORMATION OBTAINED FROM TECHNICAL REPORT NI-43-101 PROPERTY OF LITHIUM POWER INTERNATIONAL. IT IS MADE PRESENT THAT ALL THE INFORMATION IS PUBLIC AND HAS BEEN OBTAINED FROM THE INTERNET IN ORDER TO ILLUSTRATE THE GENERAL CONDUCT OF MINERALIZATION IN THE MARIKUNGA SALT FLAT.



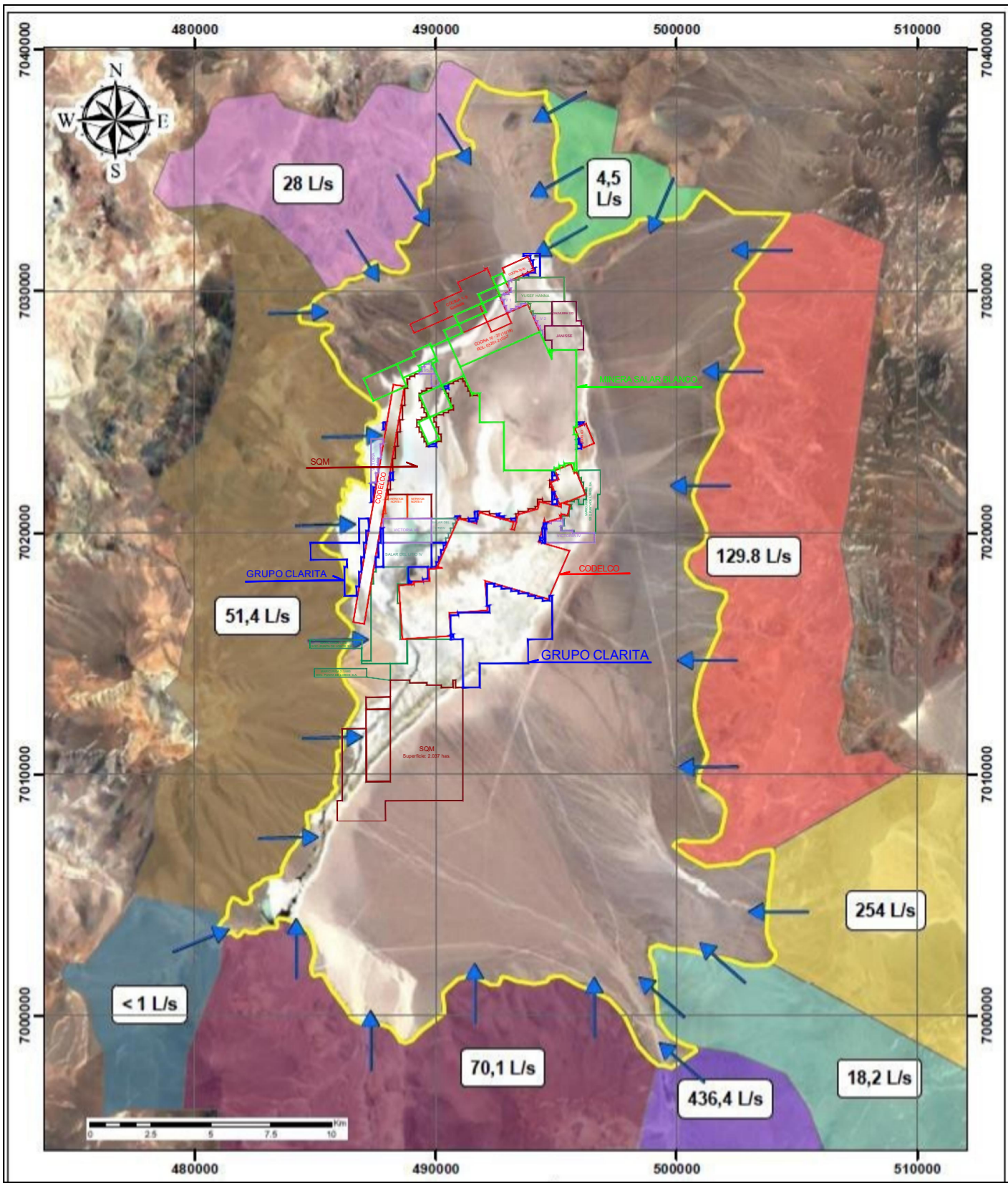
CALIBRATED DIFFUSE SEEPAGES RATES SALAR DE MARICUNGA

Legend	
	Reserve Model Domain
	Terminal Salt Lake
	Diffuse Discharge South
	Diffuse Discharge North
	Diffuse Discharge Central

GROUPS OF MINING CONCESSIONS ON SALAR DE MARICUNGA	
	GRUPO CLARITA; SUPERFICIE 1.500 has.
	GRUPO L.P.I.; SUPERFICIE 2.564 has.
	GRUPO CODELCO; SUPERFICIE 2.690 has.
	GRUPO SQM; SUPERFICIE 4.290 has.

MARICUNGA SALT FLAT	
PROSPECT:	CLARITA BONGO
CLIENT:	-----
UTM Projection: WGS 84, Zone 19S	

DISCLAIMER: THIS DRAWING CONTAINS INFORMATION OBTAINED FROM TECHNICAL REPORT NI-43-101 PROPERTY OF LITHIUM POWER INTERNATIONAL. IT IS MADE PRESENT THAT ALL THE INFORMATION IS PUBLIC AND HAS BEEN OBTAINED FROM THE INTERNET IN ORDER TO ILLUSTRATE THE GENERAL CONDUCT OF MINERALIZATION IN THE MARICUNGA SALT FLAT.



INDIRECT, LATERAL RECHARGE TO SALAR DE MARICUNGA FROM SURROUNDING CATHMENTS.

Legend	
Model domain	5. Río Lamas
Subcatchment	
1. Volcánico Norte	6. Volcánico Noroeste
2. Ciénaga Redonda	7. Volcánico Oeste
3. Cordillera Claudio G.	8. Volcánico Sur
4. Laguna Santa Rosa	9. Volcánico Sureste

GROUPS OF MINING CONCESSIONS ON SALAR DE MARICUNGA	
	GRUPO CLARITA; SUPERFICIE 1.500 has.
	GRUPO L.P.I.; SUPERFICIE 2.564 has.
	GRUPO CODELCO; SUPERFICIE 2.690 has.
	GRUPO SOM; SUPERFICIE 4.290 has.

MARICUNGA SALT FLAT	
PROSPECT:	CLARITA BONGO
CLIENT:	----
UTM Projection: WGS 84, Zone 19S	

DISCLAIMER: THIS DRAWING CONTAINS INFORMATION OBTAINED FROM TECHNICAL REPORT NI-43-101 PROPERTY OF LITHIUM POWER INTERNATIONAL. IT IS MADE PRESENT THAT ALL THE INFORMATION IS PUBLIC AND HAS BEEN OBTAINED FROM THE INTERNET IN ORDER TO ILLUSTRATE THE GENERAL CONDUCT OF MINERALIZATION IN THE MARICUNGA SALT FLAT.